



Housing and health inequalities

Dr Amy Clair

amy.clair@essex.ac.uk

[@amyclair503](https://twitter.com/amyclair503)

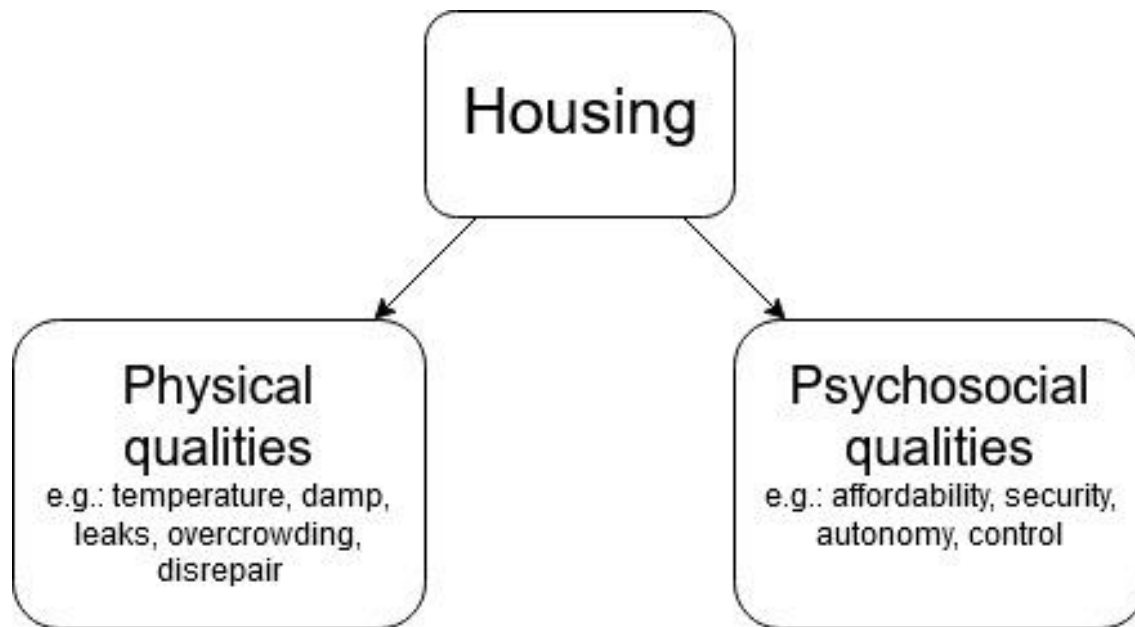


University of Essex



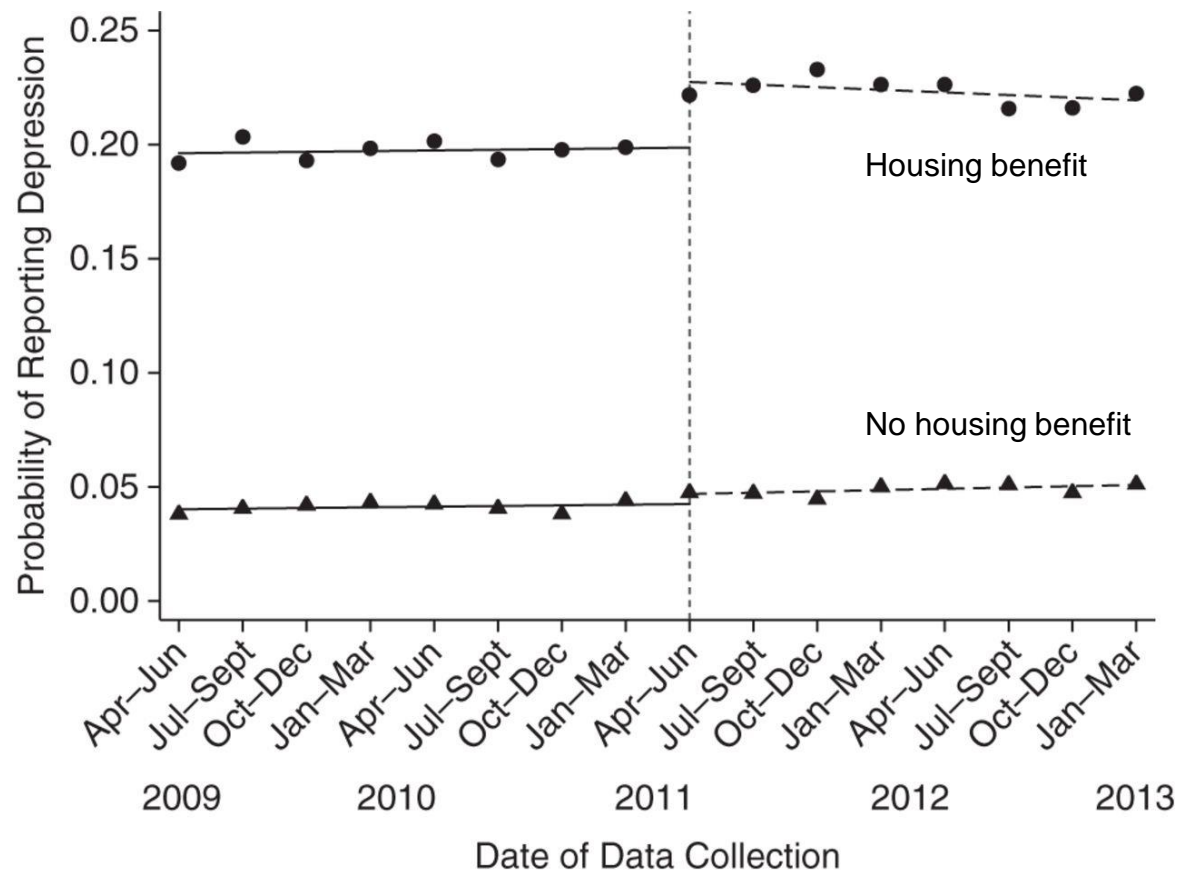


Housing and health



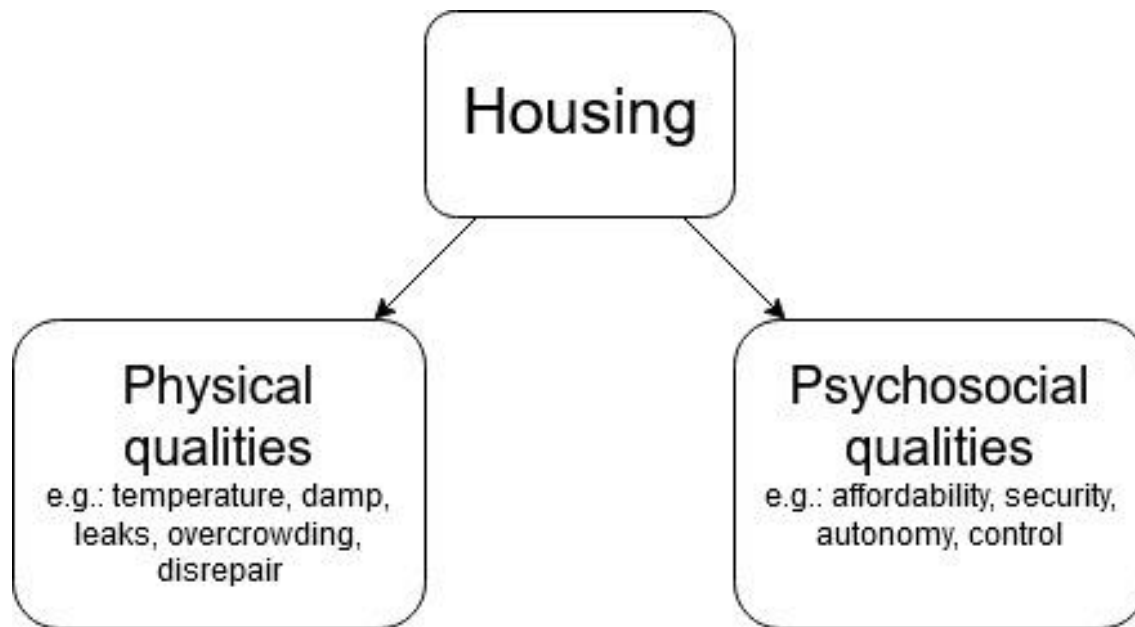
For example....

The effect of UK housing benefit changes in the private rented sector on depressive symptoms



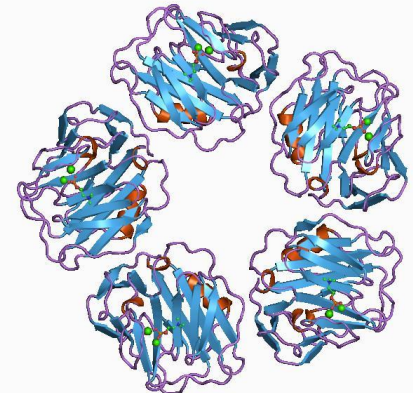


Housing and health

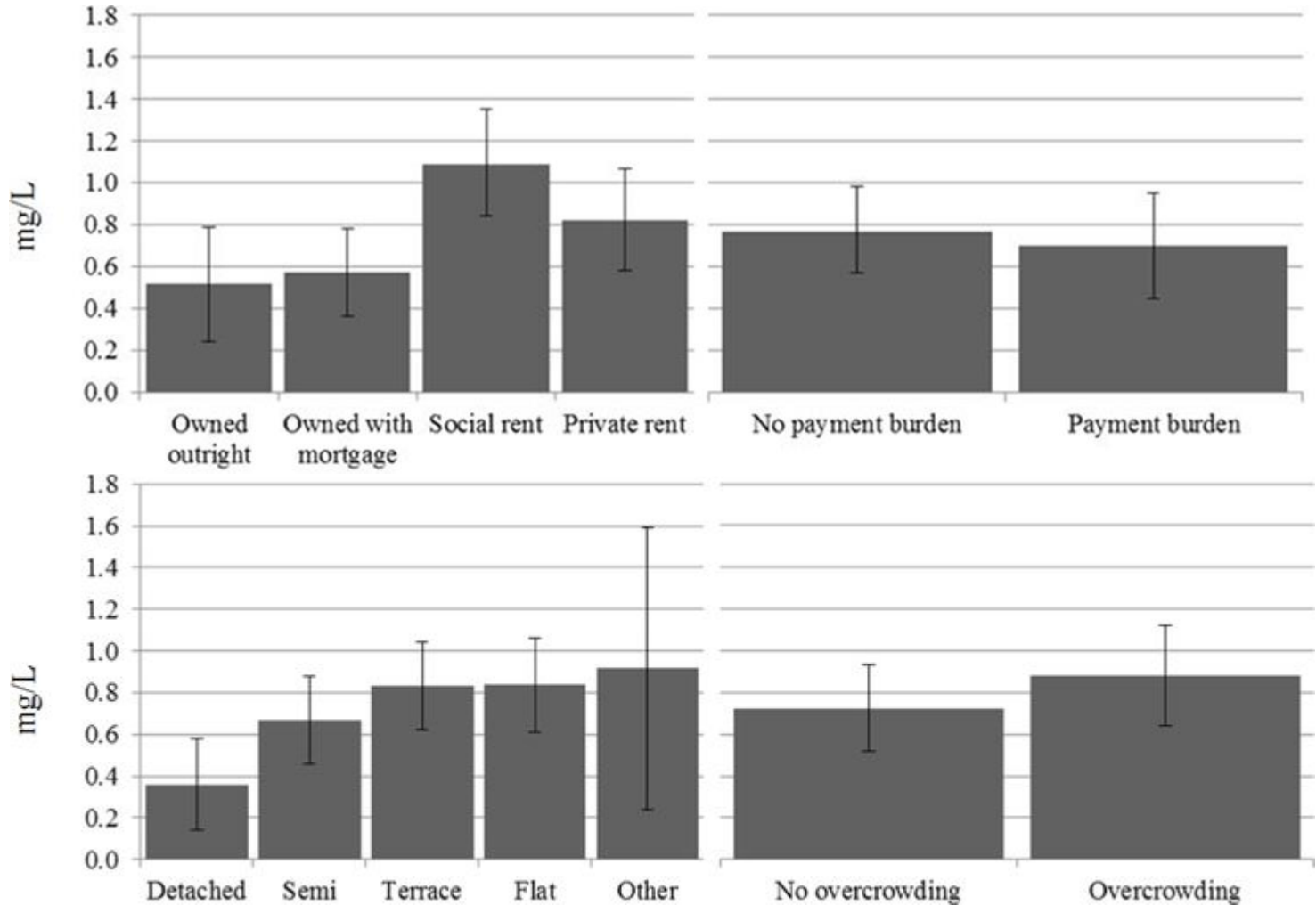


For example

- How do housing characteristics relate to objective health?
- C-reactive protein
 - A marker of inflammation associated with infection or stress
 - Higher levels indicate worse health



C-reactive protein levels



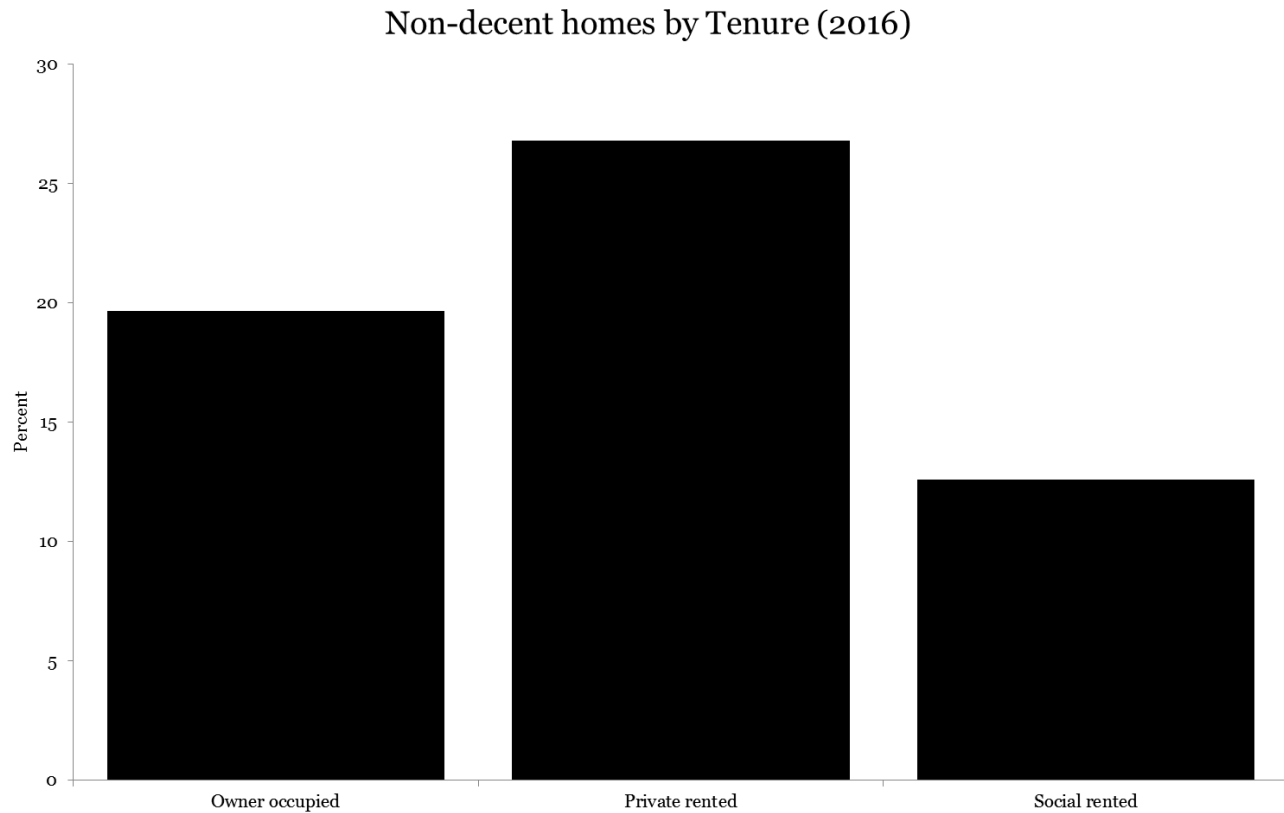


o But some relationships when controls are included:

- Tenure (private renting ↑)
- Building type (detached houses ↓)
- Housing cost burden (only for low income renters ↓!)

● ● ● | Why is private renting worse?

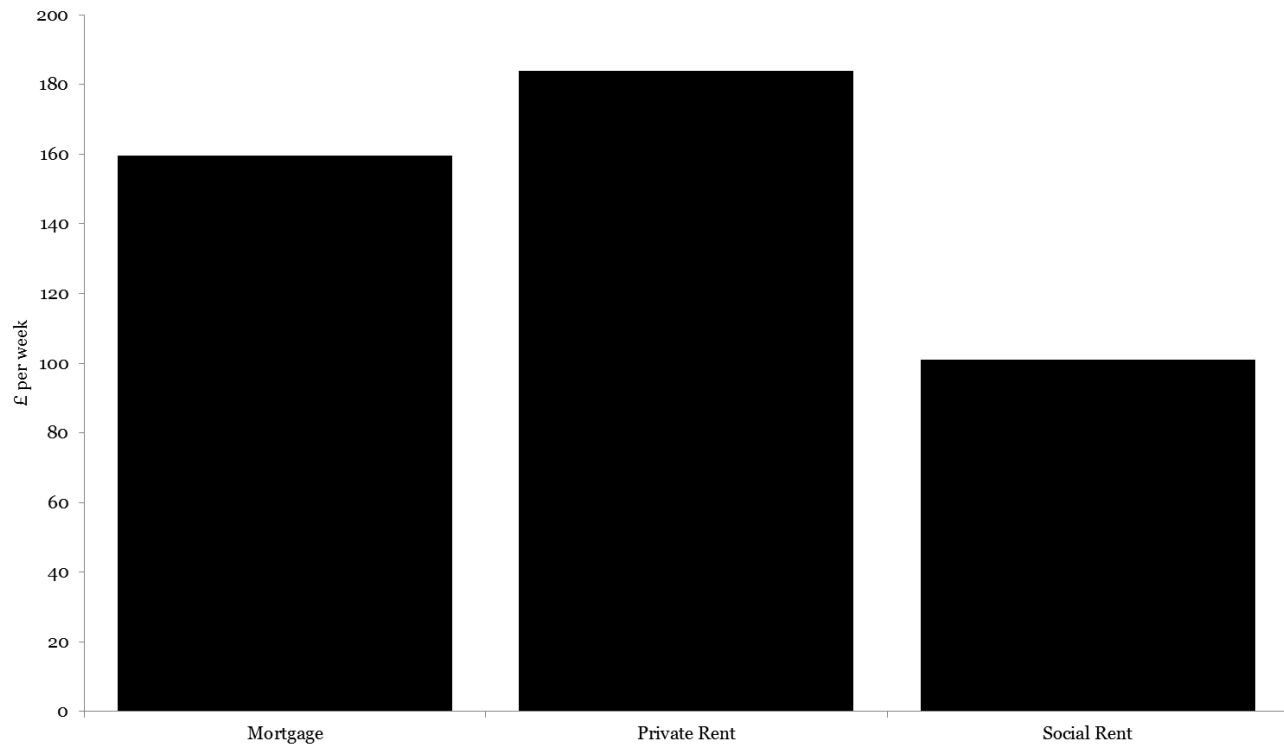
It has the poorest quality



Source: English Housing Survey headline report 2016 to 2017: section 2 housing stock tables

It is the least affordable

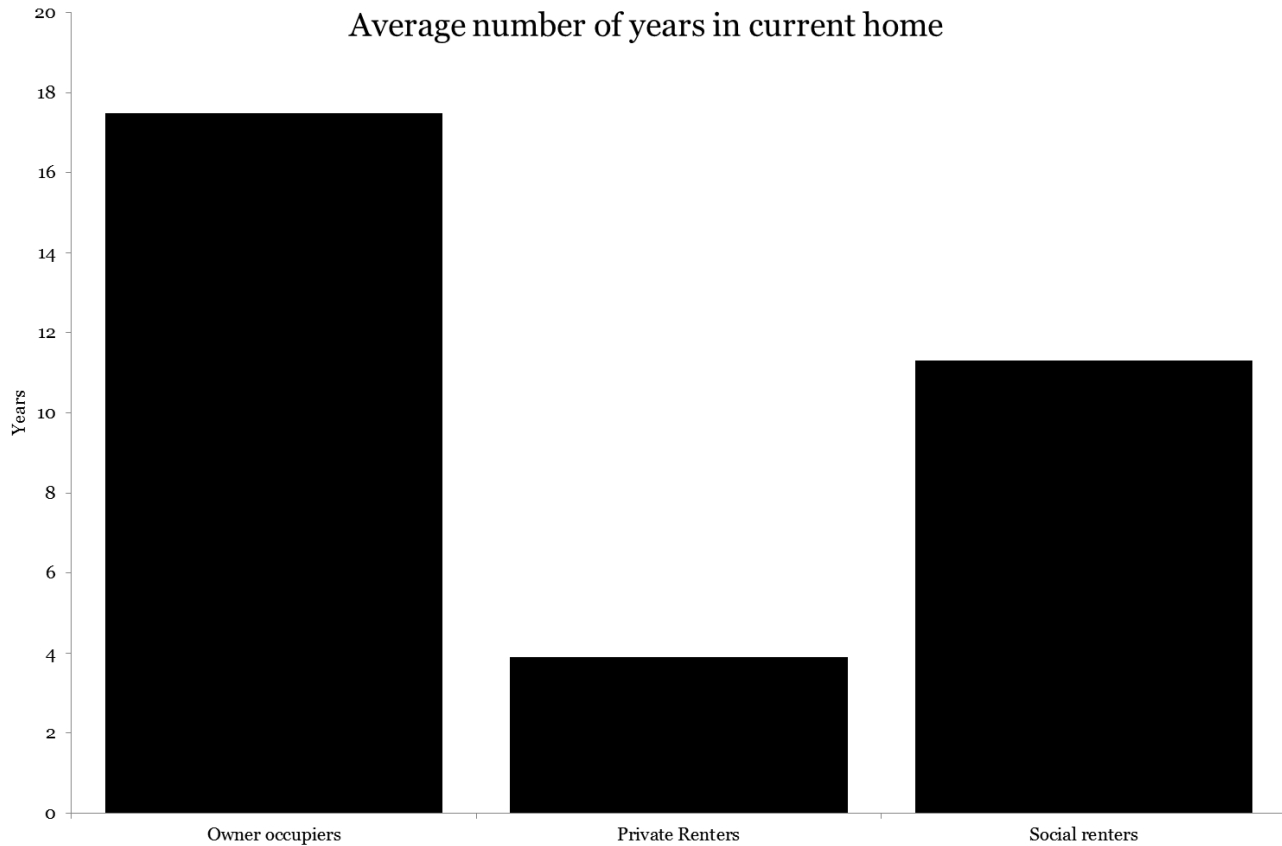
Mean weekly expenditure on housing costs



Sources: MHCLG English Housing Survey, ONS Expenditure on rent and mortgages by renters and mortgage holders by countries and regions, UK



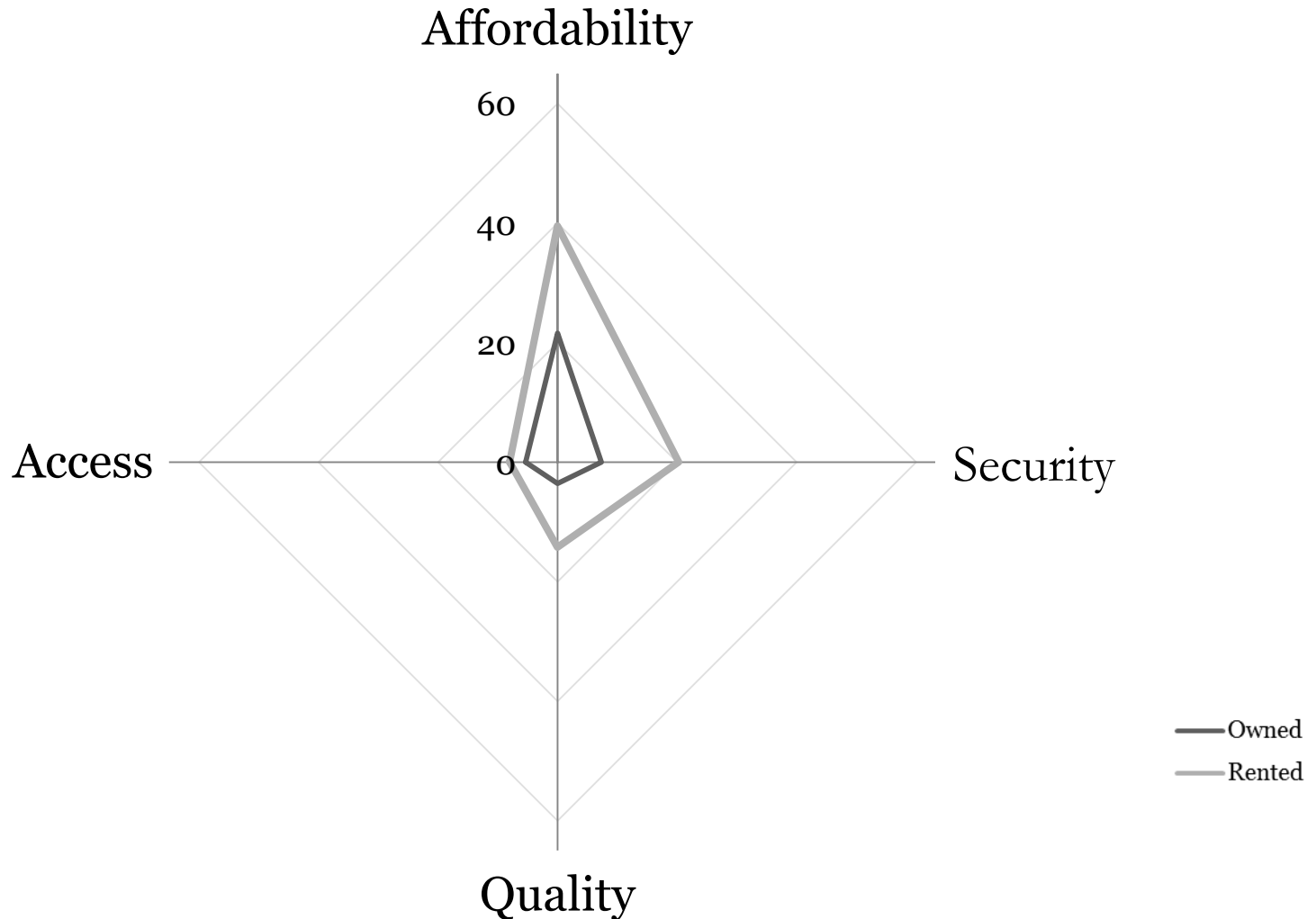
It is the least secure



Housing precariousness

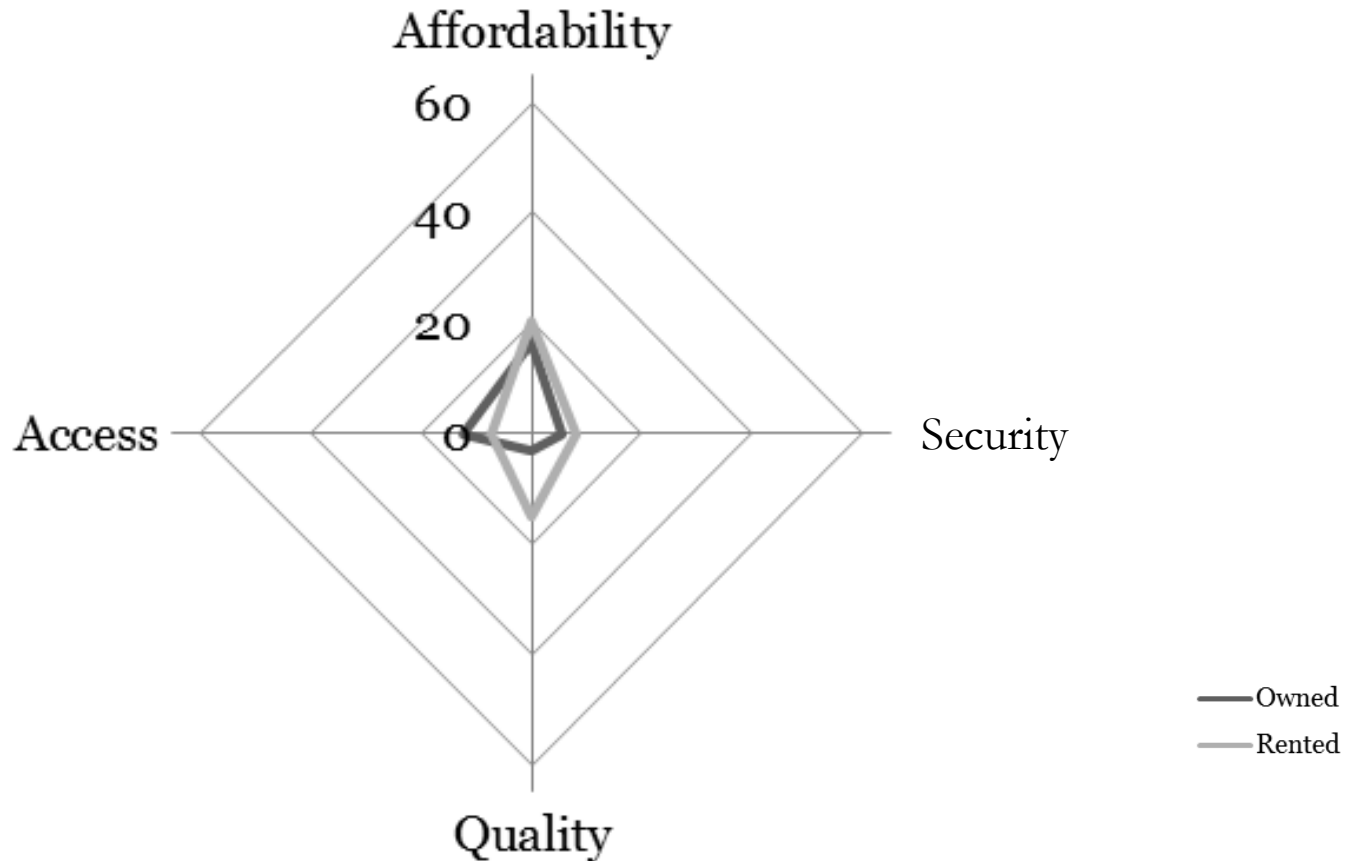


Renters have higher precariousness in the UK



● ● ● | But this is not true everywhere

Germany





Conclusions

- Individual housing circumstances are associated with health
 - But research to date hasn't explored the interrelationships between housing issues
- Must not ignore within tenure differences
- We need more data on housing



Thank you

amy.clair@essex.ac.uk

@amyclair503

@iseressex

@MiSoC_Essex



University of Essex



Economic
and Social
Research Council





The Housing Precariousness Measure

Components	Cross-National Indicators from EU-SILC
Affordability	<ul style="list-style-type: none">• Burden of housing costs
Security	<ul style="list-style-type: none">• Forced change in previous dwelling, or risk of forced change in current dwelling
Quality and facilities	<ul style="list-style-type: none">• Presence of leaks and/ or damp• Presence of essential utilities - bath/shower• Presence of essential utilities - toilet• Ability to keep home warm in winter• Ability to keep home cool in summer• Overcrowding
Access to essential services	<ul style="list-style-type: none">• Access to Grocery services• Access to Banking services• Access to Postal services• Access to Public transport• Access to Health care

Housing and health

